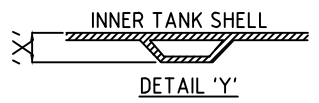
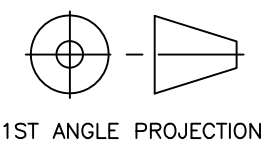


**IMPORTANT INVERT LEVEL NOTE (RIBBED TANKS ONLY!):**  
 The inlet and outlet Invert Level(IL) shown on this drawing is to internals of the shell unless otherwise stated.  
 For Invert level to the outside of the shell ribs, see the conversion below:  
 Ø1.0m, 1.2m, 1.5m, 1.8m, 2.5m IL+50mm ('X')  
 Ø3.0m, 4.0m IL+75mm ('X')



TANKS SUPPLIED WITH LOOSE SHAFTS DO NOT COME SUPPLIED WITH A FIXING KIT.  
 THIS IS THE RESPONSIBILITY OF THE SITE CONTRACTOR.



TITLE SE1.0 – 1,000L  
 SILAGE EFFLUENT

3	12.08.11	RU	DG	RU	FEET ADDED
2	17.03.10	RU	PB	RP	INLET WAS SOCKET
1	23.03.09	RU	PB	RP	ISSUED FOR INFORMATION
REV.	DATE	BY	CHKD.	APPD.	DESCRIPTION
A3	DO NOT SCALE IF IN DOUBT ASK ALL DIMENSIONS IN MM		GENERAL TOLERANCES (unless noted otherwise)		
	GRP FABRICATED	LINEAR	± 5mm ± 2mm	ANGLE	±0.5° ±0.2°
	MACHINED		± 0.5mm		±0.1°
THIS DRAWING IS THE PROPERTY OF PREMIER TECH AQUA Ltd. AND IS NOT TO BE COPIED IN PART OR WHOLE WITHOUT WRITTEN PERMISSION					

DRAWN BY RU	CHKD. PB	APPD. RP	SCALE NTS	DRAWING No. SE1.0 SALES	REVISION 3
DATE 23.03.09	DATE 23.03.09	DATE 23.03.09			