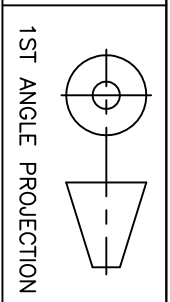
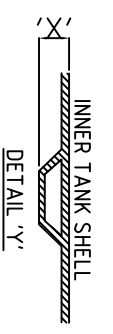


IMPORTANT INVERT LEVEL NOTE (RIBBED TANKS ONLY):
 The inlet and outlet Invert Level(IL) shown on this drawing is to internals of the shell unless otherwise stated.
 For Invert level to the outside of the shell ribs, see the conversion below:
 $\phi 1.0m, 1.2m, 1.5m, 1.8m, 2.5m$ IL +50mm ('X')
 $\phi 3.0m, 4.0m$ IL +75mm ('X')

TANKS SUPPLIED WITH LOOSE SHAFTS DO NOT COME SUPPLIED WITH A FIXING KIT.
 THIS IS THE RESPONSIBILITY OF THE SITE CONTRACTOR.



TITLE		DRAWN BY		CHKD.	APPD.	SCALE	DRAWING No.	REVISION
CP6.0 – 6,000L CESSPOOL		RU	PB	RP	NTS	CP6.0 SALES	2	
DATE	DATE	DATE	DATE	DATE				
23.03.09	23.03.09	23.03.09	23.03.09					

REV.	DATE	BY	CHKD.	APPD.	DESCRIPTION
2	17.08.11	DG	RU	RU	FEET ADDED
DO NOT SCALE IF IN DOUBT ASK ALL DIMENSIONS IN MM					
GENERAL TOLERANCES (unless noted otherwise)					
GRP FABRICATED		LINEAR		± 5mm ± 2mm ± 0.5mm	± 0.5° ± 0.2° ± 0.1°
THIS DRAWING IS THE PROPERTY OF PREMIER TECH AQUA Ltd. AND IS NOT TO BE COPIED IN PART OR WHOLE WITHOUT WRITTEN PERMISSION					