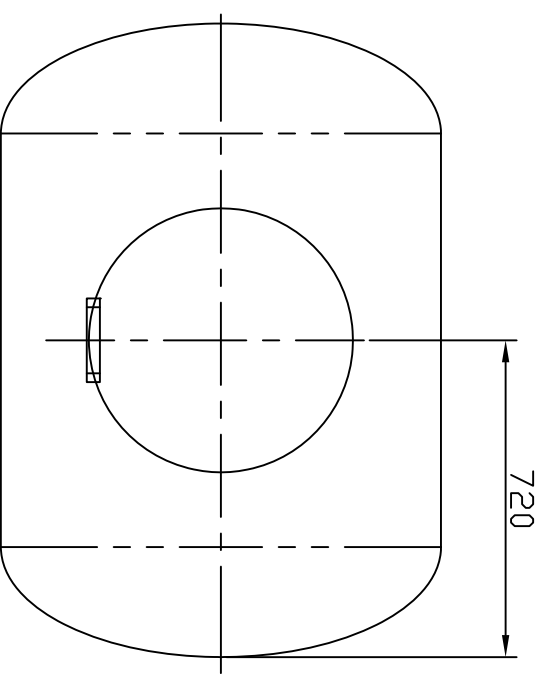
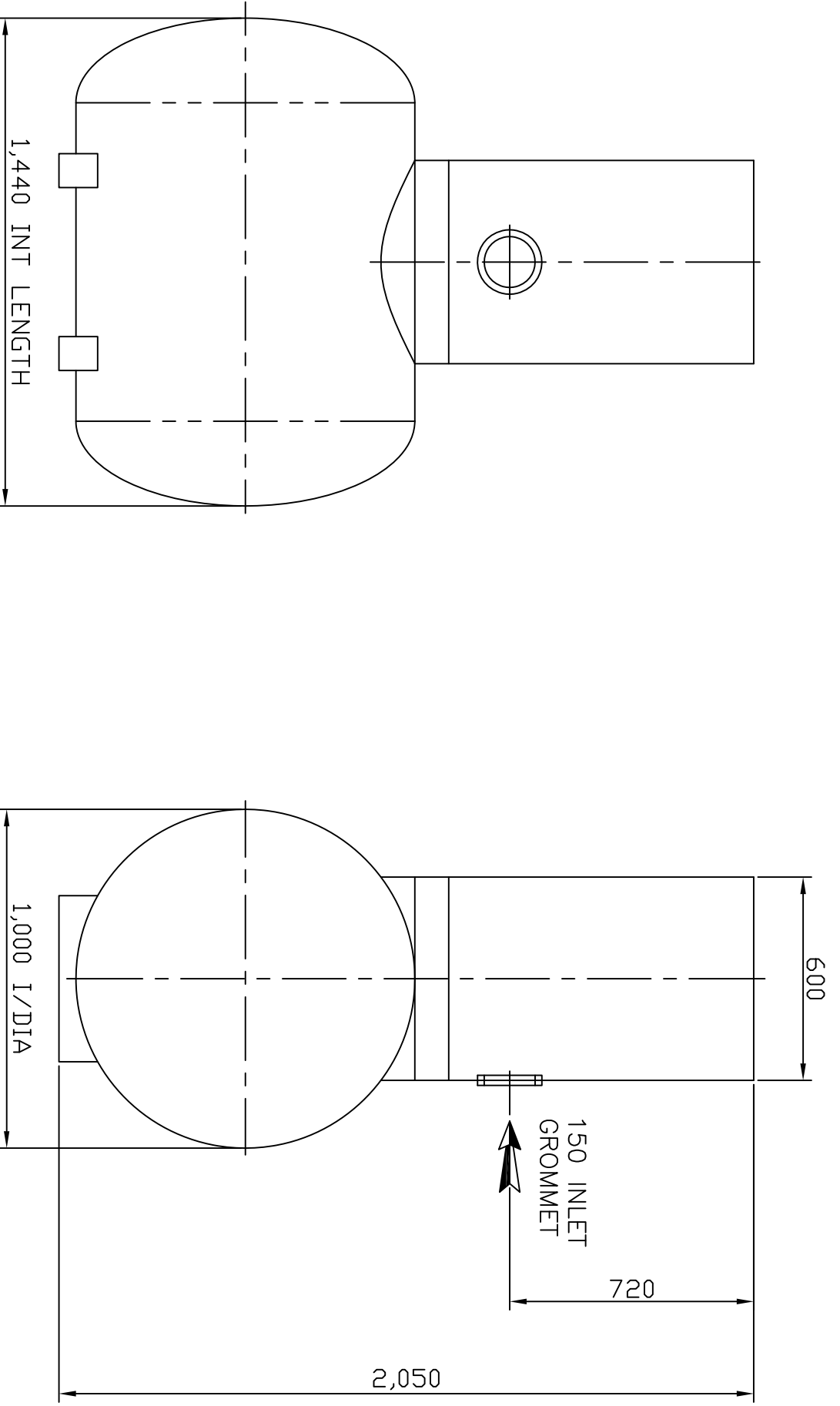
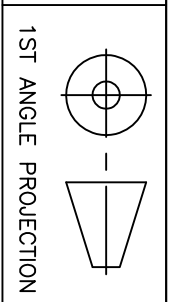
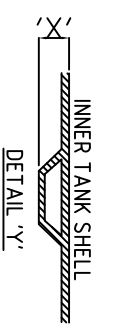


1 2 3 4 5 6



**IMPORTANT INVERT LEVEL NOTE (RIBBED TANKS ONLY):**  
 The inlet and outlet Invert Level(IL) shown on this drawing is to internals of the shell unless otherwise stated.  
 For Invert level to the outside of the shell ribs, see the conversion below:  
 $\phi 1.0m, 1.2m, 1.5m, 1.8m, 2.5m$  IL+50mm ('X')  
 $\phi 3.0m, 4.0m$  IL+75mm ('X')

TANKS SUPPLIED WITH LOOSE SHAFTS DO NOT COME SUPPLIED WITH A FIXING KIT.  
 THIS IS THE RESPONSIBILITY OF THE SITE CONTRACTOR.



TITLE  
 CP1.0 - 1,000L  
 CESSPOOL

REV.	DATE	BY	CHKD.	RU	RU	FEET ADDED	DESCRIPTION
2	16.05.11	DG					THIS DRAWING IS THE PROPERTY OF PREMIER TECH AQUA Ltd. AND IS NOT TO BE COPIED IN PART OR WHOLE WITHOUT WRITTEN PERMISSION
GENERAL TOLERANCES (unless noted otherwise)							
DO NOT SCALE		IF IN DOUBT ASK		ALL DIMENSIONS IN MM		GRP FABRICATED MACHINED	LINEAR
							$\pm 5mm$ $\pm 2mm$ $\pm 0.5mm$
							ANGLE
							$\pm 0.5^\circ$ $\pm 0.2^\circ$ $\pm 0.1^\circ$

DRAWN BY	RU	CHKD.	PB	APPD.	RP	SCALE	DRAWING No.	REVISION
DATE	23.03.09	DATE	23.03.09	DATE	23.03.09	NTS	CP1.0 SALES	2